

# LORNE

## Independent \$2

No 211 June 2019

Produced as an independent newsletter by Lorne Independent Inc.



## NEW HISTORIC CENTRE HIGHLIGHTS FISHING PAST

At the opening of the Centre to honour the town's fishing industry – left, Venessa Schernikau, GORCC Chief Executive Officer, Nikki Popovski, Christos Raskatos' daughter, Leanne Moorfoot, Christos' partner and Ken Northwood, Chair, GORCC. **Page 2**

**Collaborations for Lorne's community project - Page 4**

**Lorne Men's Shed visit the Linfox's Automotive Proving Ground - Page 5**

**Lillian - Page 6**

# NEW HISTORIC CENTRE HIGHLIGHTS FISHING PAST

In a brilliant move, Lorne's Historic Society has turned the vacant side of the Lorne Fisheries building that once housed the Lorne seafood retail outlet into a Centre to honour the once thriving fishing industry.

Hard wood timber was Lorne's first industry – sawn rod-straight eucalypt hardwood for the almost insatiable building boom that was early Geelong and Melbourne – but then came the Cousta Boats that fished the waters off the South West Coast until the mid-1980s.

From early last Century, Lorne had up to 30 cousta boats operating – a crane would hoist the boats down to the water from the Pier, and up again on their return. For all intent and purpose, the town was a fishing port and is still classified as the 'Port of Lorne'.

The large building to one side of the Pier once housed the cooling and storage areas where fish was stored, there was a large processing room fitted with benches and a gully to sluice away water used in the processing and packaging of the fish, ready for shipment to the hungry markets of Melbourne.

When the cousta fish disappeared, literally from one day to the next, the facilities were turned into a successful retail outlet by the Raskatos family – Lorne local Julie married to Bill Raskatos, their son Steve and of course front of house, Christos.

Christos Raskatos, with his charm, his poetry and his incredible salesmanship turned the retail shop into a Lorne institution. For the last 30 years it was where you went to buy your fresh fish, chat with Chris who knew everyone; 'Chris's' as it became known was the place you said hello to friends, exchanged gossip and arranged to meet later for a 'jar' or 'glass of wine'.

The Great Ocean Road Coast Committee (GORCC) has had overall authority of the Point Grey area since 2004 and still leases out one part of the building to Spiros (Sammy) Gazis and his family from where they operate the super-successful 'Pier' Restaurant.

(Continued page 3)

*Below: At the official opening. Peter Spring, Lorne Historical Society opening the Centre. The Society hopes to gradually add to the exhibits honouring the Lorne active fishing industry that came to an end just over 30 years ago*



(From page 2)

The fish retail outlet, however, had remained empty since the death of Christos last year (the family didn't want to continue the business and now lives in Geelong) and GORCC was most enthusiastic in helping the Lorne Historical Society establish a historical centre with an aim to attract tourists wanting to know a little of the town's past.

Walking into the Centre through the free hanging plastic strips once used to keep out insects, the interior holds the well-known paintings of creatures of the sea by Lorne artist Rob Coy, there are historical photos and press-cuttings up on the walls, and of course the ghost of Christos looms large.

There are also television screens to show a short clip of Lorne and another of Chris in his prime.

Chris' image is all-dominant and you get the feeling he's just about to come out from another room, holding a large lobster in his hand, saying: "You must have it with some good champagne ...and some of my stolen lemons!"

*Below: The front of the old Fisheries building – GORCC has plans to rebuild the whole area in the future*

*Right: Christos in the front of the shop front with the award-winning oil portrait of himself, painted by then Lorne local Susan Sutton*

# TrickeyBros.

PLUMBING | EXCAVATION | ROOFING

info@trickeybros.com.au

03 5289 5211



# COLLABORATIONS FOR LORNE'S COMMUNITY PROJECT

The refurbishing and partly rebuilding of the Lorne Historical Society's building on Mountjoy Parade has been achieved under a new arrangement between various stakeholders – the Society, the Surf Coast Shire and the Lorne Men's Shed.

The Society's building erected some years ago to also include the town's Community House and was in definite stage of urgent refurbishing. Situated across from the state-of-the-art Visitors Information Centre, it was the first building travellers viewed as they came across the Erskine River bridge into Lorne proper.

Under its president Gary Allen, the Society's rooms were repainted, the floors sanded and its vast collection of historical artefacts were tastefully distributed. The outside of the building still needed a lot of work.

"We had talks with the Shire (the Surf Coast Shire) and came to an agreement whereby the outside would be renovated with



the help and co-operation of the Lorne Men's Shed," said Peter Spring.

In what Peter Spring called "a high degree of collaboration between parties", the Surf Coast Shire pledged to match funds raised for the project on a dollar-for-dollar basis. \$50,000 was soon available which the Shire matched. Material was donated by Barwon Timber.

Two qualified architects, members of the Men's Shed, re-designed the façade of the building, and the wood panels were cut and assembled in the Men's Shed's own workshop. Men's Shed President, Allan Walls said, however, though the work on the building was made by Sheddors gratis, "we have a strict policy of not taking work

away from any Lorne tradies."

Through the services of the Shire's Derryn Chiller, a member of its public relations team, a short video was made of the project which can be seen on YouTube:

<https://www.youtube.com/watch?v=NX1BCrG0nmc&t=21s>



Sketch of new façade designed by architects Chris Wood and Bob Sinclair

# LORNE MEN'S SHED VISIT THE LINFOX'S AUTOMOTIVE PROVING GROUND

The automotive vehicles of the future will certainly be nothing like today's, and recently on an absolutely beautiful day on the Surf Coast, about 20 Sheddars from the Lorne and District Men's shed visited the Linfox AARC Automotive Proving Ground near Anglesea to hear answers to many of their questions.

The majority of the Sheddars came by bus from Lorne with a few driving their own vehicles. All were made welcome by Ari Suss (CEO of AARC and a senior executive within the Linfox group), Prof David McInnes (an advisor to the Linfox Group on development of autonomous vehicles and previous CEO of AARC) and Bernard Martin (AARC Member - Business Manager).

Ari gave a video overview of the facility – the facility is equal to the best in the world. For those interested in more detail visit the website [www.aarconline.com](http://www.aarconline.com).

David talked about the developments and challenges in moving to a society where possibly within a decade the majority of vehicles will be electric and autonomous. Although predictions on the timeframe may vary, there does not seem to be an argument about driverless/autonomous vehicles.

Many questions were asked by the shedders. A couple of points to share from this presentation:

- Vehicle manufacturers are redefining their business from manufacturing to providing mobility solutions.
- Vehicles will 'talk' to each other.
- People won't own cars – it will be like calling an Uber. Think of the disruption that this will cause. A few shedders were not quite sure on ownership (but will be autonomous) - maybe this is a generation mindset.
- The most challenging time will be when 50% of vehicles are driverless. David pointed out this is no different from when travel moved from horse to car.

That was just a few points!

The Anglesea proving ground was purchased by Lindsay Fox in 1991 after International Harvester had been in receivership.

Did Lindsay have a vision that 30 years later it would be set up as a proving ground for autonomous vehicles? Probably not! At the time, his vision was to have Australia's best proving ground for driver training and testing for new developments in safety for vehicles. Today, the proving ground is an evolution of this vision and the Sheddars could see this in action.

Grant Hausler from Swift Navigation a San Francisco based tech firm building centimetre-accurate GNSS technology and a cloud-based GNSS Corrections Service to power a world of autonomous vehicles, gave a quick overview of why they have established an operation in Australia.

Linfox is now looking at the next stage to develop the digitised infrastructure at AARC for testing of autonomous vehicles.



After the presentations all Sheddars had a tour of the facility and a demonstration of Bosch's ESP braking system. Several Sheddars went in the demonstration car being tested on the Ceramic and Basalt tile skid pads.

On the tour of 1,000-hectares it was certainly noticeable how well the facility is maintained. A trademark of Linfox.

After the drive around, a bush barbecue was provided and Rheinmetall MAN and Thales gave the shedders an opportunity to see the massive vehicles that they are building and testing for the Australian Government.

At the conclusion of lunch Shedder President Allan Walls thanked the Linfox staff for sharing their future vision with us and hospitality. After lunch Keith Miller and Sam Johnson with a couple of other Sheddars had the opportunity to be taken around a section of the four-wheel-drive track with Bernard.

**David Worth**  
Lorne and District Men's Shed

Lorne Independent Inc.

Published by Lorne Independent Inc.  
No. A0041756Y

ABN: 54 724 981 550

Published monthly

Finalist (2006), Best Layout,  
Community Newspaper Association of Victoria

Alan J. Holding Award (2008), for  
Outstanding Community Service,  
Lions Clubs International District 201 V2

Winner (2008), Best Editorial Writing,  
Community Newspaper Association of Victoria

Winner (2009), Best Sports Article,  
Community Newspaper Association of Victoria

Finalist (2011), Best News Reporting,  
Community Newspaper Association of Victoria

Finalist (2011) Best Editorial Comment,  
Community Newspaper Association of Victoria

Finalist (2012) Best Feature Article,  
Community Newspaper Association of Victoria

Finalist (2013) Best Feature Article,  
Community Newspaper Association of Victoria

**Accounts and Treasurer:**

David Stribling  
PO Box 213 Lorne, Vic  
Tel: 5289 5355 Mob: 0408 546 424  
Email: david.k.stribling@gmail.com

**Editor & Inquiries:**

Jo Vondra  
PO Box 213 Lorne VIC 3232  
Tel: 03 5289 1344 Mob: 0401 744 152  
Email: jvondra@bigpond.net.au

**Circulation Manager:**


Harri Muller

**Layout and Print:**

Mud Group

The Lorne Independent Inc. is produced on a non-profit voluntary basis and, as a newsletter, seeks to give in its pages open access to the community. It is important to note, however, that opinions expressed by authors of articles are their own. Advertising and publicity for community events is free, and all other contributions are most welcome. Supplied copy and pictures must bear the name and address of the author and/or organisation. The editorial committee of the Lorne Independent reserves the right to cut, alter or otherwise work the articles to make them suitable for publication. The committee also reserves the right to reject articles and/or photos if it deems the material to be unsuitable for publication.

**Please note: Absolute deadline for copy is five days before the end of the month.**



# THE LOUTTIT LOOP

*‘Lillian gone to somewhere  
droving, and we don’t know  
where she are.’*

Apologies to ‘Banjo’ Patterson.

Yes, our Lillian has taken time off to tour the fashionable watering holes of Europe, so we’ve had to select a few items in lieu of her own unmistakable words. Hopefully, she’ll return to us soonest!

*A fantastic achievement for the team at our local Lorne P-12 College who were recognised by the Victorian Curriculum and Assessment Authority (VCAA) in receiving the VCAA Chair’s Award. The Lorne team were praised for their commitment to developing meaningful and practical projects in collaboration with the local community and beyond. Their hands-on approach to learning is an integral part of the VCAL program, and over the years the school’s Victorian Certificate of Applied Learning (VCAL) team has involved students in many community projects - well done to all involved.*

Lifelong Lorne resident and long-time Lorne School Assistant Principal Geoff Couper also registered a great achievement recently, but not on the educational front. On the 11th Hole at the Lorne Country Club Geoff managed to “ace” the challenging par three to register the first hole in one in competition since 2011. Geoff’s name will be added to the honour board that is proudly displayed in the Club house with the late Mark Trickey being the last person to achieve the feat.

*An interesting report from Propertyology surfaced recently which revealed that the Surf Coast is now Australia’s fourth-most expensive place to buy a home, surging ahead of Melbourne and just two places behind Sydney. According to recently released report, the median cost of housing on the Surf Coast is now \$835,000, behind only Kiama (\$910,000), Sydney (\$950,000) and Byron Bay (\$987,500). Melbourne is seventh on the list with a median of \$775,000 and Geelong in at number twenty four with a median of \$531,000.*

The Historic Archway at the P-12 College has successfully been straightened and refurbished and we will be having a ‘re-opening’ of the archway on Thursday June 6th, commencing at 2pm. Originally opened in 1929 the archway marked the fiftieth anniversary of the opening of the School. In particular the archway commemorates deceased scholars of the School who fought and died in War. It has since been an iconic landmark for both the School and the town and thanks to skill and hard work it has now been preserved for many years to come.

(Continued page 7)



(From page 6)



At the 're-opening' all students and staff will be in attendance and anyone in the school or wider community is welcome to attend. The event will include some special guests from the era who will share their memories and this promises to be a great celebration of a favourite landmark.



*Condolences to the Amerena family with the recent passing of Dr Vincent (Vin) Conrad Amerena, aged 90, known to his friends as 'Big Vin'.*

*Vin, a much respected authority and teacher in the dental industry, went out of his way to project the image of a grumpy old man. He was anything but ... a warm and gentle soul, much of his conversation was tongue-in-cheek. His lectures on*

*the working of dental laboratories are memorable for their humour and biting wit.*

*Vin was awarded the Public Service Medal which acknowledges public sector employees who demonstrate excellence, leadership and innovation. Vin was extremely honoured to receive this award for his outstanding public service to dentistry.*

*He was also enormously proud of his Italian heritage. He loved Lorne and built his first house in Waverley Avenue in 1976 though his link with the town began in the 1940s and when he built his second house next to the old house subsequently bought by son Dr John Amerena, he was often found reading, propped up on the kitchen bench, flipping over the pages of a newspaper or book, the door wide open and ready to talk to whoever passed. On a comment about spending time in Lorne by himself, he said: "Ever known an Italian without wine?"*



*He was keen on his grandchildren learning Italian and he invariably emphasised the value of education.*

*He called his wife Veronica 'Ronnie' and love for his huge and extended family was boundless. Vin must have made sure that his great sense of humour was passed on. One of the family's obituaries read: 'Ronnie's beloved husband for 64 years (you get less for murder). Grumpy father of the five Vultures: Jack de Werka, Marzie, Doolarse, Witty and Mitta. Barely tolerated father-in-law of the hanger-on-ers. Teasing Pops of the 15 bloody grand kids. 'Celebrated' member of the St Kilda Football Club for 80 years (there in '66). Lorne 'local' since 1945 Renowned for his world famous lecture "What should I do with my ulcer?" (Nothing). Finally Marching with the Saints!.. Thank you Vinnie for your presence and your presents!!'*

*Now that's an obituary that would be hard to beat! - JV*

The Foodworks Lorne Spinners this year raised close to \$25,000 towards Lorne Hospital's 'Creating Opportunities that Empower Youth' project in the Murray to Moyne cycling relay.

And a hearty clap and thanks from the Hospital staff and board members for their efforts.

A key feature of the project aims to support the young people in our community to become productive and healthy individuals. Through partnerships created with Lorne Community Hospital, local youth will have opportunities to engage in activities that enhance their skills and confidence and support their general wellbeing.

Lorne Community Hospital CEO, Kate Gillan said, "We cannot thank the continual support of the dedicated riders, sponsors and donors enough, who each year dedicate their personal time and energy to participate in this major fundraising event for the Hospital."

The Murray to Moyne is an annual cycling event to raise funds for hospitals and health services throughout Victoria. The ride travels 520km from the Murray River in Mildura to the Moyne Shire in Port Fairy.

For anyone interested in participating in the 2020 ride, please contact Karyn Hogg on 5289 4383.

## Grand Pacific Hotel & Apartments Lorne

**BUFFET  
BREAKFAST  
8.30 - 10.30  
Lunch  
12.00 - 15.00  
Dinner  
From 5.30 to 8.30 pm**

Events & Functions  
Talk to our friendly staff about  
booking your next conference,  
special occasion & event

03 5289 1609 [www.grandpacific.com.au](http://www.grandpacific.com.au)



GRAND PACIFIC HOTEL & APARTMENTS

LORNE AUSTRALIA

03 5289 1042  
[MOVIDA.COM.AU/LORNE](http://MOVIDA.COM.AU/LORNE)

**MOVIDA  
LORNE**



**ALL-INCLUSIVE  
LUNCH**

FRIDAY, SATURDAY, SUNDAY

**\$60PP | 3 COURSES  
2 HOURS OF FREE FLOW  
SPARKLING & WINES**

VALID UNTIL JUNE 30. BOOKINGS ESSENTIAL

### Southern Edge Property Maintenance

Cleaning and Gardening Services

Luke: 0431987107  
Kristy: 0423979779

[southernedgepropertycare@gmail.com](mailto:southernedgepropertycare@gmail.com)

Quality Work Reliable and Friendly Service

Fully Insured  
ABN:94804828688

## FIRE WOOD Sugar Gum

0418 522 011

Sourced exclusively from 100% plantation grown trees

Density: Sugar Gum 1070 Red Gum 915

Heat Content: Sugar Gum 95% Red Gum 81%

### Making use of waste - lessons from Barwon Health



Image courtesy of Surf Coast Shire Council

John Agar MBBS, FRACP, FRCP (London), OAM

a kidney specialist, will speak at the

Fig Tree Community House Lorne  
3 pm Sunday 23rd June.

All welcome

John's talk will be followed by the AGM of the Friends of Lorne





From the Deck by John Agar

# HOW DO BIRDS SLEEP AT NIGHT?

On my deck, on a perfect morning, a magpie alights on the rim of the bird-bath I keep full and fresh for our birdlife – though I do sometimes wonder if I am really doing the town a dis-service by giving the cockies a free fill-up station ...

‘Maggie’ eyes me, unblinking. Maggie smiles a Maggie kind of smile ... all beak and beady eye ... then tips back her head, and breaks into joyous, unrelenting song.

The words of another song – long-burned into the fabric of my youth – surfaces from memory:

‘The sound you make is [music] to my ears

You must have learned something in all those years

[But], how do you sleep ... how do you sleep at night?’

With deep apologies to John Winston Lennon for my slight change to his painful cry of anguish to a friendship lost, re-working his meaning from bitterness to joy ... how does this most majestic musician among all our throatful Australian birds ‘sleep at night’?

Where does she go? Does she really sleep? And, if she sleeps – as she surely must – does she ‘nod off’ standing upright? ... does she pop a Bex and have a good lie down? ... does she hang just upside down from a branch? ... or, as common-sense would seem to dictate, does she return to the warm comfort of her nest?

But, if the latter – as my gaze sweeps the trees – where, then, are all the nests? There seem to far more birds than identifiable nests. And, this seems to be no more so than with our cocky population ... where do they go at night? ... except to our bin lids! While the town is thick with them by day, try finding one at night! I have always thought it is one of life’s great mysteries.

And what of migrating birds, airborne and thousands of kilometres from land ... how do they ‘rest’ during their endless flight?

While birds have several sleeping techniques, one thing birds rarely do is sleep in a nest! Nests are primarily built for rearing babies, and not for a comfy night’s shut-eye.

Most day-awake birds do ‘sleep’ at night, but their sleeping habits and techniques are very different to ours. To paraphrase a reputable source, they ... “find something to perch on – a branch, a sill, or a rock – fluff up their feathers, turn their heads round, tuck their beaks under a wing, pull up one leg ... then bid hemispherical goodnight!”



This ‘fluff and tuck’ technique prevents the escape of body heat from the barer bits – the beak and the legs – as they are tucked tightly away under warming feathers.

Further, as the full weight of the bird channels downwards through the standing foot, the force contracts and tightens the tendons of its single standing foot into a vice-like grip around the branch. If you have ever hand-fed a king parrot, you will know how strongly it grips your finger! The standing foot is then intermittently alternated.

Water birds – like our Erskine ducks – sleep near the water where they squat or stand, one-legged, on a partially submerged stick or rock, their heads, bills (and one foot) tucked away, just like land birds do.

But, as predators always threaten, no bird wants to be ‘caught napping’! Birds commonly use a technique called uni-hemispheric slow-wave sleep (USWS). While one half of the brain sleeps, the other half remains semi-alert, ready to trigger flight if danger threatens. Many birds literally keep ‘one eye open’ as they snooze the other half of their brain. Again, snoozing brain halves are alternated.

Birds in flight use this technique too, alternating the two hemispheres of their brains between sleep and wakefulness to ensure the mechanics of flight and navigation are sustained while still snatching some ‘shut-eye’ for ‘their other half’.

Bird brains [this article seems to be brimming with .....] are built differently to ours. Our two brain hemispheres are interconnected, preventing USWS. Bird brain hemispheres, however, are separated – one from the other – allowing one half to switch off while the other half remains switched on.

For birds, sleep is all about staying warm ... but also staying safe. Depending on their natural predators, different birds have evolved different techniques to ensure their safety. This not only includes their USWS trick, but guile, too ... whether by using the camouflage of dense foliage, the detection of vibration through water or twig, or, when flock sleeping, a sentinel bird ‘roster’ – with one bird alert and on watch while others safely snooze. Incidentally, you will always see cockies using the sentinel bird technique for feeding, too.

One fun thing to do at night is torch-spot for sleeping birds ... well, it’s fun for us, but not necessarily as much fun for the poor creatures you may startle from their uni-hemispherical sleep!



**WE NEED YOU!**

Would you like to help in the community and make new friends?

Men and women are most welcome:

For further information call:

John Bliss - 0419 156 166

"We serve"

**SURF COAST**  
CARPET CLEANING

STEAM CLEANING:

- CARPETS AND UPHOLSTERY
- TILES AND GROUT
- FLOOD RESTORATION AND MORE...

WWW.SURFCOASTCARPETCLEANING.COM.AU

**0417 581 149**

*Dries in hours, Not days!*

**gannon**

**BUILT** CUSTOM BUILDER



JAMES GANNON  
0419 155 370

james@gannonbuilt.com.au

gannonbuilt.com.au



**BARKLEY**  
& ASSOCIATES PTY LTD

Chartered Accountants

**Lorne:** 1<sup>st</sup> Floor,  
136 Mountjoy Pde, Lorne VIC 3232  
Mail to: PO Box 58, Lorne VIC 3232  
P: 03 5289 4277 F: 03 5289 4285

**Highton:** 1st Floor,  
2A Bellevue Arcade,  
Highton, VIC 3216  
P: 03 5245 8949 F: 03 5241 6963

E: lester@barkleyassociates.com.au



**Volunteer Positions Vacant**

Lorne SES Unit is currently recruiting for six new members to assist in keeping your community safe.

As well as emergency response, VICES volunteers engage with the community to help them prepare for disasters.

Can you commit to two volunteer hours per week?

Can you see **yourself** in orange?

For more information phone Adrian on 0419 114 003  
or email lorne@ses.vic.gov.au

**Wayne Adams**  
**Painting & Decorating**  
**Rendering & Texture Coating**

**Master Painters Australia Reg. No 2295**

**Phone Wayne**  
**0417 337 756**

**How can we help you today?**

Over the years, we've come to understand the needs of locals and we'd love the opportunity to meet you and understand your goals. Every path is different, but they all have the one thing in common, we're here to help.

Drop by and meet branch manager **Andrew Shaw** and the team at the CommBank Lorne branch today, or call us on **(03) 5289 1415**.

**CommBank Lorne branch**  
68 Mountjoy Parade, Lorne.



**Things you should know:** Applications for finance are subject to approval. Commonwealth Bank of Australia ABN 48 123 123 124. Australian credit licence 234945.

# AQUATIC CLUB

Keith Miller - Commodore

## News from the Lorne Angling and Aquatic Club

We've fired up the inside and outside heaters and the TV is on FOX SPORTS so drop in and enjoy our friendly cosy club, take in our beautiful views and sample the worlds best and coldest beer.

As usual we are running happy hours from 5pm until 6pm every Wednesday and Friday nights and our regular raffle every Saturday night with 3 prizes drawn at 7pm.

We had record crowds over the recent school holidays with a lot of our members and visitors taking days off between Easter and ANZAC day enjoying the sensational weather.

We've had a lot of members using our facilities for Birthday parties and the like recently with our marquee proving very popular. It's quite cosy under the marquee with a gas heater, even on the coldest of nights.

Just remember to book well ahead with Hutch.

If you're not a member why not join now. It's not expensive. Pensioner \$25, Single \$45, Family \$60. Boat Owner \$75 which is the same as a family membership but also allows you to use our boat wash and fish cleaning facilities.

### Advantages of Becoming a Member:

- You will have unlimited access, non-members can only visit five times and must sign in each time
- Off season happy hours on Wednesday and Friday evenings
- Membership card lucky number draws
- Discount off bait
- Use of our facilities for weddings, parties anything
- Free meals and discounted refreshments at club events
- Be a part of the worlds friendliest club

### Upcoming Events

Major Fishing Competition Number Four on the 9th June, which is the Sunday of the Queens Birthday Long Weekend, sponsored by Tom Dawson from Dawson Concreting.

Come along and give it a go, bring the kids, grandkids, nieces or nephews, get them away from the screens and get them out into our beautiful fresh ocean air and enjoy the great outdoors.

Prizes are awarded to the juniors (under 18) and seniors after each competition followed by a scrumptious roast lunch which is free to all competitors.

All non fishing members are invited to come along and watch the fish being weighed in between midday and 12.30 and they can purchase a roast lunch for only \$10.

### World Sausage Roll Championships

Held on Sunday the 9th of June, Queens Birthday Long Weekend. Judging will begin at 5pm.

We now own the name "World Sausage Roll Championships" - we've registered it as a trademark.

Entries are still open but filling up fast. We will have to put a lid on the number of entries because we don't want our judging panel to expire from over eating sausage rolls. We will be serving free hot sausage rolls all weekend to add to the theme.

We are also having a condiment competition for the best homemade chutney, relish or tomato sauce.

All members and visitors are welcome to come along and join in the fun.

### Recent Events

We've had two fishing competitions since my last newsletter.

Major Comp Number Three which was held on Easter Sunday, sponsored by Peter Ryan & Associates and our first Winter Cup Competition held on the 5th of May, sponsored by Peter Wheal Landscapes.

The conditions were a bit ordinary for the Easter Comp but we still had a good turn out with plenty of fish weighed in.

The open winner was Ian Middleton with a big salmon = 3420 points.

Runner-Up was Paul Staley with a nice big yank flathead = 2640 points.

Third was Pat Russell with a big six spine leatherjacket = 2600 points.

In the junior section it was a family affair with the Lodges winning everything.

First was Zane Lodge with a flathead = 2410 points.

Runner-Up was Quinn Lodge also with a flathead = 2320 points.

Third was Daisy Lodge with a salmon = 2080 points.

For our first Winter Cup Comp again the conditions weren't the best but thanks to our faithful stalwarts we had a successful day.

The winner was Ian Middleton with a huge salmon = 2840 points.

Runner-Up was Steve Arundell with a nice trevally = 2220 points.

Third was Brett Stewart with a mullet = 2210 points.

(Continued page 12)

(From page 11)

We will have to start calling Ian Middleton the “Salmon King”.

Ian drives down to Lorne all the way from Bendigo and hardly ever misses a comp. He fishes off the rocks and regularly wins our comps with big salmon. After the presentations everyone enjoyed a beautiful Mixed Grill which was expertly cooked by “Flea”. Not one burnt snag.



The “Salmon King Ian Middleton” striped shirt on the right.

## Mens Shed Model Boat Regatta

We were proud major sponsors of this event with many of our members being involved. It was a great success with our perfect autumn weather again turning it on.

Our Vice Commodore Doug Williams being an experienced sailor was the hot favourite but he went to water as soon as the pressure was applied. His new nickname is now “The Snowflake”.

The race was won by ex-Collingwood footballer Max Pitts sponsored yacht named Magpie. The successful skipper was Bob Sinclair but in the middle of the race Bob had to run off (use your imagination!) and handed the reins over to Graham Brawn who successfully finished in front.

I’m not sure whether nerves caused Bob’s problem or his opposition got to him. We will probably never know.

## Bowls Challenge

We held our inaugural bowls challenge recently when we took on the bunch of “cupcakes” at the Lorne Bowls Club, it was a good fun night but unfortunately we got a hiding.



Myself presenting the inaugural “Cupcake Cup” to the president of the Lorne Bowls Club Gary Allen.

I’m sure next year we will be better prepared and more competitive.

We will try and run it on a Sunday afternoon in February which will be more convenient for some of our out of town members.

We had a good turn out considering it was a cold Tuesday evening with about 40 bowlers competing for what has been titled the “Cupcake Cup”.

## Fads News

It looks like we are going to get two, possibly three FADS (fish attracting devices) off Lorne.

Recently myself and Ric Addison met with Victorian Fisheries Technical Officer, Brent Womersley, at our club house to discuss the timing and location of them.

They will be deployed in November and removed in April/ May which will be perfect timing to hopefully attract Yellowtail Kingfish and possibly Mahi-Mahi.



Above: Ric Addison, Brent Womersley from Fisheries and myself discussing the location of the FADS.

(Continued page 13)

(From page 12)

## Footy Tipping

Sponsored by SMYTH REAL ESTATE.

1st Peter Steven = 50 points  
2nd Donna Issell = 49 points  
3rd Hutch = 48 points

## Rescue Boat

The rescue boat isn't looking very promising. I've tried every politician with authority to help us out but had no luck at all. I've given up for the time being but will give it another crack after the election.

On the Sunday of the Labour Day Long Weekend in March I broke down off Mt Defiance and called a fishing mate and fellow Committee man Ric Addison to drive his boat around to assist.

A strong southerly wind had whipped up and Ric hit a big wave throwing him into the windscreen of his boat breaking his sternum and cracking several ribs. None of our boats are suitable for ocean rescues and the only true rescue boats are at Apollo Bay and Torquay which are too far away to be practical.

## Point Grey Redevelopment Update

It's been a little while since we have provided an update on the LAAC building at the Point Grey Redevelopment but that's not to say that nothing has been happening - to the contrary!

I think that when we last reported that what was being presented was still not in accordance with the LAAC internal brief to the Architects and it was not acceptable to the LAAC building sub-committee.

We were also told that the triangular building shape and form was not negotiable.

The previous cost plan that accompanied these plans indicated that the costs were well outside our budget.

Now the good news.

After many further long meetings with many marked up drawing provided by the committee, GORCC has finally accepted the preferred LAAC internal layout with some revisions to the triangular form of the building so as to provide more open light to the northern grassed external areas that will reduce the costs and hopefully bring the building back on budget.

There are some simplified finishes to the internals as well, to bring down the costs.

At this time, these documents are being prepared to go to GORCC's Quantity Surveyors for re costing.

We have also been advised by GORCC that the necessary increased area for the LAAC building has been looked on favourably by the authorities.

Once the revised drawings and costings have been issued, we will issue an update and display the plans within the club rooms.

## Surf Coast Shire Grant

Unfortunately the Surf Coast Shire did not include any funding for us within this year's budget. \$75,000 was included in last year's forward budget but has now been removed. We will continue to work with them to seek funding when the costs and timelines are better known. The SCS has acknowledged their willingness to work with us in this regard.

## Fishing Report

The water temperature is hovering around 17 degrees which is quite warm for this time of year. The blue water disappeared a few weeks ago and was replaced by hazy green water and the snapper appeared with it.

The snapper fishing has been sensational with some Anglers reaching their bag limit in the first hour and most of them are above 40cm with some 60cm specimens being landed.

King George Whiting are scarce and didn't appear in big numbers again this year but east of us they are having one of the best seasons ever.

Good size flathead are still on the go but the real big ones have moved on.

There are plenty of schools of salmon busting up everywhere but can be hard to approach. Some days you can drive right up to them and other days they go down as soon as you get within a hundred metres.

There are still plenty of Blue Mackerel and Yakkas around and they have now been joined by small barracouta who love to bite your hooks and sinkers off.

The tackle shops must love them.

A few big Gummy Sharks have been coming in with an 18kg one landed recently.

As a by-catch when targeting snapper we have been getting lots of Nannygai and Swallowtail which are welcome as they are pretty good eating.

The Lorne Pier is performing well with reports of good catches of calamari, salmon, trevally, mullet, snapper and the odd whiting.

**Keith Miller**  
**Commodore**



**Contact the  
Lorne Medical  
Centre on  
5289 4333.  
Private Health  
rebates apply.**

# FROM OUR COUNCILLOR

For the Lorne Ward Cr Clive Goldsworthy - 0400 756 854 [lorneward.information@gmail.com](mailto:lorneward.information@gmail.com)



## National Volunteers Week

After seven years as a Councillor, the significant community commitment of our volunteers across the Shire still amazes me. Whether it be a sporting club, the local Opportunity Shop, the Visitor Information Centres and our very committed members of the CFA and SES, the list goes on with over 6,500 volunteers

across the shire.

During the 30th anniversary of National Volunteers Week I attended two community functions in Lorne to celebrate and thank our volunteers. A morning tea and a function held at the Lorne Bowls Club where over 60 volunteers met to play lawn bowls and a classic Aussie BBQ. Special thanks to the Lorne Community Hospital who organised the event and our sponsors Surf Coast Shire, Lorne Lions and the Lorne Community Bank (a branch of the Bendigo Bank).

I wish to acknowledge all our volunteers and extend a special and huge thank you to all for your commitment to our communities.

## Great Ocean Road Authority

In October 2018, the Victorian Government unveiled a landmark action plan to protect the iconic Great Ocean Road coast and parks for generations to come. Work is now underway on the implementation of this Action Plan. Community consultation is occurring along the Great Ocean Road including Deans Marsh & Lorne.

Deans Marsh – Community Hall, Fri. 31st May, 6.00 - 9.00pm  
Lorne – Lorne Community House Sat. 8th June 2.00 – 4.00pm

## Committee for Lorne Luncheon

The next Committee for Lorne luncheon will be held on Friday, 7th June at The View.

The topic for this event will be “The next stage of community and agency cooperation in Lorne”.

Guest speakers :

Cr Rose Hodge, Mayor. Keith Baillie CEO and Chris Pike, GM, Culture & Community.

Register by email [Nicole@greatoceanroadrealestate.com.au](mailto:Nicole@greatoceanroadrealestate.com.au)

## Eden Project Anglesea Concept

In 2017, Lesley & I travelled to Europe and visited the Eden Project in Cornwall it was one of the highlights on our trip. A potential opportunity for a similar project now exists at the former mine site in Anglesea.

The Eden Project, a UK-based educational and environmental charity and social enterprise, and Alcoa Australia have

commenced community consultation to seek feedback on a concept for a world class eco-tourism attraction within Alcoa's former mine site in Anglesea.

Visit [www.edenprojectanglesea.com.au](http://www.edenprojectanglesea.com.au) for further information.

Youtube also has an excellent video titled Eden Project : an overview.

## Australian Sports Foundation

The 2018/19 Financial year is nearly here and its time to consider whether you are able to make a tax deductible donation to the Australian Sports Foundation for either the Lorne Football & Netball Club or the Lorne Country Club. Both clubs are seeking to upgrade their facilities. All donations are tax deductible. Thank you for your consideration, contact either club on the following email addresses.

LFNC - [lornefnc.com.au](mailto:lornefnc.com.au) - Maxine Spizzica.

Country Club - [info@lornecountryclub.com.au](mailto:info@lornecountryclub.com.au) - Dale Ridgeway

## Lorne Historical Society Façade Project

In 2016 the Lorne Historical Society proposed a project to update the façade of its building drawing on the skills and enthusiasm of the Lorne Community. The contribution from the community included fund raising, sourcing of materials, architecture services and fabrication of exterior panels by the Men's Shed. The Shire recently produce a video of the project which can be found on Youtube titled: Lorne Historical Society

## Lorne Community Connect

The next Celebrity lunch will be held at the Community Connect Building on Wednesday 5th June at 12 noon, come along and offer your suggestions to creating a multi purpose Arts space within the precinct. Register your name on the notice board at LCC or email [lornecommunityconnect@gmail.com](mailto:lornecommunityconnect@gmail.com) by Monday 3rd June.

Trouble with your  
TV or Antenna?

Knox Antennas  
Robert 0408 559 631

# LORNE BOWLS CLUB

Merna and Ken Smith

Players enjoyed two excellent dinners in the clubrooms during May. First, the presentation of trophies night was held on Saturday 11th May, 2019, where players who had won Lorne Bowls Club awards, as named in the previous issues of the Lorne Independent, were presented with their trophies.

In addition one special award (the Ken and Merna Smith Cup) was presented to John Russell who does outstanding work for the club. Well deserved John!

Second, an Aquatic Cup challenge issued by Keith Miller the Commodore of the Aquatic Club was held on Tuesday 14th May, 2019. What a great social success.

Teams of four were formed up on the night to contest the "Cupcake Cup". Presentations were made to the Skips of the teams. ( Cupcakes beautifully packaged as well as actual trophies). Bowls Club President Gary Allen was presented with the official "Cupcake Cup" trophy by Commodore Miller. Why the "Cupcake Cup" title? The challenge was made by the Commodore to show those "Cupcakes" down at the Bowls Club what bowling was all about.



*He's trying hard in the Cupcake Stakes!*

A barbeque was operated throughout the evening – sausages, hamburgers, and onions were on offer. After six ends a bell would ring and bowling would stop for everyone to enjoy a drink and food, then the bowling would start again to complete the ten ends competition. Everyone enjoyed the night. Because of the social success of the evening the challenge for the cup will become an annual event. Let us hope the Aquatic members will improve their game!

After winning premierships in each division entered this season, each team is expected to be placed one Division higher. It will be necessary to field a Saturday Pennant team in Divisions 1 and 3 and a midweek Pennant team in Division 2.

A new Tuesday morning practice session has been arranged to ensure that players can give a good account of themselves in the next Pennant season. The practice which starts at 10.20am is open to all and so far has proved to be quite popular with up to 16 players attending each session. Practice games in groups of 3 and 4 players have been arranged so that players from Division 1, 2 and 3 play in a mix of different combinations each week. All players please remember to keep Tuesday morning free from 10.20am to 12 noon for a practice session.

**What do you love about kinder?**

**"Playing with the doctor stuff  
and the obstacle course"**

**-Sarah, Lorne Kindergarten**

**Now is the time to register to secure  
your child's place at kinder for 2020.**

Children who attend kindergarten have the opportunity to:

- develop their identity
- contribute in a group setting
- strengthen their sense of wellbeing
- become confident and involved learners
- practice communication skills

They gain independence through play in a safe and happy environment, and are more likely to make a smooth transition to primary school.



**Register  
before 16  
June!**



# GreatOceanRoad

## REALESTATE LORNE

### FOR SALE

#### 52 SMITH STREET LORNE



#### CENTRE STAGE!

Not often does a buyer get the chance to seize this opportunity for prime vacant land in one of Lorne's most sought after locations! With a north-east orientation and boasting an ocean vista this gently sloping allotment comprises of 558sqm (approx.) and bathed in plenty of all-day sun.

The key draw card to this allotment is its sensational location only 100 metres from Lorne's main street precinct. With a towel over your shoulder and surfboard under your arm, embrace the easy stroll to Lorne's main beach or walk home with a coffee from Moon's cafe that will still be hot as you enter your front door!!

This sale comes complete with shire approved plans for an amazing Ewert Leaf Architect designed home comprising of 3 levels, 4 bedrooms, 3.5 bathrooms and complete with outdoor pool.

Utilise these approved plans or build your own dream beach property (STCA) amongst the vibrant, cosmopolitan vibe!

**\$1,450,000**

**Karen Stribling 0439 650 838**

**Tyrone Provan 0405 124 799**

From the team at  
Great Ocean Road Real Estate

### HOLIDAY RENTALS

#### 2/118 MOUNTJOY PARADE LORNE



#### WELCOME TO WATERFRONT TWO

Boasting one of the best locations in Lorne, relax on the deck or simply walk across the road to access Lorne's main beach, Waterfront Two is a spacious 2 bedroom, 2 bathroom apartment with open plan kitchen, living and dining area. Take in the fabulous panoramic ocean views over Louttit Bay and hear and see the sand lap the front beach!

Right in the heart of Lorne with a sunny beach vibe, whether it be summer or winter, you'll want to come back time and time again.

[www.greatoceanroadholidays.com.au](http://www.greatoceanroadholidays.com.au)

#### PERMANENT RENTALS AVAILABLE

##### LORNE

###### 1/4 Smithers Street, Lorne

• 1 bedroom, 1 bathroom - Partially furnished - \$225 pw - available now

###### 5 George Street, Lorne

• 3 bedroom, 2 bathroom - \$420 pw - available now

###### 1480 Deans Marsh Road, Lorne

• 2 bedroom, 1 bathroom - Furnished - \$310 pw - available now

###### 3/33-35 Armytage Street, Lorne

• 2 bedroom, 1 bathroom - \$370 pw - available now

###### 3/5-7 Cora-Lynn Court, Lorne

• 2 bedroom, 1 bathroom - \$360 pw - available now

# WHY IS AUSTRALIAN MALE HEALTH SO IN NEED OF ATTENTION?



## Good question!

Because the health status of males in most countries, including Australia, is generally poorer than that of females.

More males die at every stages through the life course, more males have accidents, more males take their own lives and more males suffer from lifestyle-related health conditions than females at the same age.

Meanwhile, men are less frequent visitors to general practitioners, and the perception is that they don't care about health or that health services are not well-prepared to interact with men effectively.

It is clear that women are healthier than men, but why? Some of the theories that attempt to explain the health differences between the sexes include:

- Men are more likely than are women to work full-time. Office hours for most medical clinics coincide with typical work hours, so men in full-time employment find it difficult to make an appointment. (Of course, this is also true for women who work full-time.)
- Men, particularly older men, typically prefer to see a male doctor for intimate or embarrassing issues. However, the family doctor may be female.
- Men are traditionally encouraged to do the high-risk jobs that are stressful, dangerous and deadly such as mining, logging and construction.
- Men are encouraged by our culture to be tough and independent. Some men could believe that visiting doctors or complaining of feeling ill, are threats to their masculinity.

To mark Men's health week in June, the theme, 'Keeping Boys and Men Healthy' is a timely reminder to encourage men to be proactive in looking after their health.

Regular medical check-ups to help you stay healthy and to pick up early warning signs of disease or illness is so important. Cardiovascular (heart) disease, diabetes and some cancers can often be picked up in their early stages, when treatment may be more successful.

When you have a health check, your doctor will talk to you about your medical history, your family's history of disease and your lifestyle. Your diet, weight, how much you exercise and whether or not you smoke will also be discussed.

If you have high-risk factors, such as a family history of a disease, it may be more likely that you will develop a particular disease. For example, high blood pressure may be an early warning sign of cardiovascular disease.

When it comes to health, prevention is better than a cure. Screening programs are designed for people without any signs or symptoms.

So even if you feel healthy, it's wise to keep up to date with your appointments.

**Dr David Mullen,**  
Lorne Medical Centre



# Lorne Maintenance Service

0478 000 730

All home maintenance  
Licence VBA 19409  
Friendly advice given

Plumbing, carpentry, painting and general repairs

# Lorne Community House

[communityhouse.lorne@swarh.vic.gov.au](mailto:communityhouse.lorne@swarh.vic.gov.au)  
5289 2972

Games Group Thursdays 1.00 to 3.30pm  
All welcome

Gardening Get together Tuesdays from 11am  
Playgroup Thursdays 9.30am  
Computer Access Monday to Thursday - 9.30am - 2.30pm

**ERSKINE FALLS FARM**  
GRASS FED FREE RANGE EGGS  
OTWAY RANGES VICTORIA

Erskine Falls Farm is family owned and operated with 50 hens per hectare. The birds are free to roam and eat grass all day under the watchful eye of 'Isabella' the Maremma dog. The eggs are freshly delivered from the green and pristine Great Ocean Road hinterland.



ERSKINE FALLS FARM  
OTWAY RANGES VICTORIA  
GRASS FED FROM THE LAND

Erskine Falls Farm  
Erskine Falls Road Lorne  
vincent.a@sky.com  
Phone 0425 902 223



**Jumbo**  
spout cleaning

Specialising in roof, gutter and downpipe cleaning.

**PETER LYNCH**

38 Waverley Ave.  
Lorne, 3232  
Mobile 0409 426 523  
[jumbospoutcleaning@yahoo.com.au](mailto:jumbospoutcleaning@yahoo.com.au)  
ABN 88 951 197 697  
Fully Insured and trained with Hi-Safe Industries

# WALSH & HAY

ACCOUNTANTS & ADVISORS



*Where everybody counts*

- Income Tax Return Preparation
- Preparation of Financial Statements
- GST Compliance ▪ Business Advisory Services
- Cashflow & Budgeting ▪ SMSF Administration
- Year End Tax Planning ▪ Cloud Accounting Solutions

T: (03) 5232 1365 15 Connor Street Colac Vic 3250  
E: [reception@walshhay.com.au](mailto:reception@walshhay.com.au) W: [www.walshhay.com.au](http://www.walshhay.com.au)  
Apollo Bay Office: 93 Great Ocean Road, Apollo Bay

CPA   Like us on Facebook

# LorneCARE News

- caring for our environment

*Joining in a LorneCare working bee is a practical way of learning about Lorne's magical environment and showing your love for it.*

*This month we expect to be working along the beautiful Lorne foreshore starting at:*

**10.00am on Sunday 16 June**

*For the exact location see the Lorne Community Noticeboard outside the Post Office and on Facebook during the previous week.*

*A barbeque will follow the working bee at about 12.30pm. Visitors and new starters will be made especially welcome.*

*For more information about LorneCare contact:*  
Alain Purnell Tel: 5289 2906 Mobile: 0417 031 905  
Email: [alainpurnell@bigpond.com](mailto:alainpurnell@bigpond.com)

**Sponsored by  
Great Ocean Road Cottages**

*Lorne – a place of natural beauty and special significance*

# I SAW RED

Doug Williams

When I came across a lily flowering recently I got a little jolt of delight. I hadn't seen one of these for a long time and told my wife how happy I was to come across it, telling her it was either a Vallota or a Scarborough Lily.

It was in this same garden that I'd been recently introduced to the most unusual and uncommon Paintbrush Lily (*Haemanthus coccineus*) which is also dramatically called Blood Lily and which has broad flat green leaves like the tongue on a Rolling Stones logo.

Back in the 1970s local gardeners called them Elephant Ears yet now for some reason this appellation doesn't accord with modern Google. It's not until after the flowers die down that the big leaves appear and that's all I'd ever seen in gardens until now. They are from South Africa and grow well in Lorne since they don't like frost which we very seldom receive, need a well-drained site and are best left undisturbed (so you don't have to culture them if you don't have time to).

If you wish to transplant them or give them to a friend, like all bulbs and lilies they should be shifted when they are dormant – so after the foliage dies down but before the flowers reappear.

In due course I looked into other red flowering lilies because I do like true reds in the garden and came up for air after a few hours in the search. There is a wide and diverse selection in this spectrum and, I thought, one could pay homage to the all-white garden at Sissinghurst by planting exclusively red flowering plants.

This could include trees such as flowering gum and Illawarra Flame Tree (*brachychiton*) – there's a beauty at the entrance to the Ocean Road caravan Park (the one across the river from the supermarket) - any number of large shrubs, lower growing plants that could include kangaroo paws, and border plants such as begonias.



Paintbrush Lily (*Haemanthus coccineus*)

Red lilies allow for plenty of choice so that your scarlet toothbrush lily which grows to only thirty centimetres can be grown alongside a clump of crimson sprekelia which are taller and then cannas, taller again, would occupy the upper storey.

An all red garden? I don't think it would work though; it certainly wouldn't work for me. But red highlights should be a definite inclusion in a garden design. The sprekelia is from southern Mexico and here we call it Jacobean Lily but it has a number of soubriquets – Maltese Cross, Aztec Lily and Mexican Fire Lily. Technically none are correct though because, like the paintbrush lily, it's not classified as a true lily. They are both indisputably red flowering bulbs though as are, for example, canna and arum lilies, dahlia, gladiolus, hippeastrum, liliium, tigridia and tulip and there are even red nerine and babiana varieties available. But valotta would be a true lily, I thought, surely? Well yes it is. It is a true lily and need not be confused with Scarborough Lily because, as it transpires, they are one and the same plant hailing, like so many plants in our southern hemisphere gardens, from South Africa.

# LETTERS TO THE EDITOR

## Correspondence from by-gone days

I was a student at the Lorne State School in the 1931-1938 years and as such, am a friend of Doug Sterling and Geoff Jarratt and am also a stamp collector.

In discussion with Doug Sterling recently, I suggested that I would like to put together a collection of old records of correspondence from and to old residents of Lorne, for the period say: 1860 – 1920. This period would include envelopes, letters, Post cards, legal documents, trading accounts, statement for goods and services to residents of Lorne, both before the existence of the Post Office in 1888, and of the time when letters and correspondence would be received by residents.

My intention is to present the album or albums to the Lorne Historical Society for their records of our wonderful Post service

Doug thought that it was a great idea, so over to you people of Lorne, and / or any other interested party who would like to see some more of the history of our town, held in a place where it could be viewed by present and future generations.

The address for all correspondence to me is:

Norman Mills  
Room 204, Cheltenham Manor,  
14 Wilson St., Cheltenham, Vic, 3192

Or contact my daughter Wendy 0408 362 022

## YOUR COMMUNITY, YOUR VOICE!

If you have the time and the interest to spend a little time each month helping the Editor to put together the stories and opinions that chronicle life in Lorne, your enthusiasm and assistance would be much appreciated. You can contact the editor for further information or to register your support.

Ring Jo Vondra on 0401 744 152

## Hideous Skateboard Shelter

Thank you Lillian for the Louttit Loop reference to the hideous skateboard shelter blocking the view of the ocean...I agree. It serves no purpose and should be taken out.

The same can be said for the weather cover installed at Beach Breaks.

It blocks the view of the ocean, is ugly and only serves to cover punters who spend their day drinking rather than being on the beach.

Let's move to take it down and restore the ocean view before next summer.

David McCormack  
Lorne

## Independent Lorne

It is just on 12 months since the new manager of the Lorne Post Office arrived.

This is no easy role to fulfil, dealing as it must with the summer madness and the winter desertion. Tourists are supplied with all manner of needs from IT equipment to postcards.

As a local I live high above the town of Lorne with no street delivery and so rely on a post office box.

Ankur Bhambri, post manager, and his offsider Karan Shah have not missed a beat in delivering my mail. If post is addressed to the street residence it still finds its way into my box.

I receive many packages, magazines and journals on a regular basis. Yet when I am away for a few days I return to find these precious parcels waiting in the box or in the mysterious back room.

Service is excellent, polite and cheerful and it is a joy to walk into the shop itself, crowded with useful goods, clean and colourful.

I simply want to say 'Congratulations and thank you.'

Sandra McComb  
Lorne

*Otway Heart  
Cardiology Service*



APOLLO BAY & LORNE

- Echocardiography
- Stress Echocardiography
- 24 Hour Holter ECG

[www.otwayheart.com.au](http://www.otwayheart.com.au)

# OP SHOP BUZZ

Mandy Calder

We get lots of footwear donated to the Op Shop. It comes in all shapes and sizes ...from tiny, new, hand knitted baby booties that are only about 6cm long, to huge rubber flippers that look like they would fit a yeti!

Just recently we had a couple of pairs of ski boots that had cost well over \$500 to buy new, and various types of sporting shoes, including footy boots and cycling shoes, that come and go quickly.

Many customers come in and look at our rack of women's shoes on the end wall. There are sandals and sneakers, ballet flats and dancing pumps, but best of all are the heels! Some are so high that the wearer might suffer from vertigo! In years and months gone by we have sold Prada and Jimmy Choo heels, and a long parade of spangly, sparkly, shiny heels that look like they've only been worn once.

Some are patent leather and others are suede and we've had them in all colours of the rainbow. Perhaps they have graced the feet of brides or bridesmaids, or mothers of the bride at weddings.



Maybe they've been bought for a special birthday party or other one-off event. They are all gorgeous and waiting for someone with the right-sized foot to come and claim them.

Not long ago a stylish gent came in and bought 3 pairs of patent leather, pointy-toed men's shoes that fitted him perfectly. He was sure they would draw comments at his rock 'n roll parties! More often blokes come in looking for work boots or runners with a few more months wear in them. You can't go wrong at \$5.00 a pair!

As always, we have to ask our donors to make sure that footwear is saleable. Sandals with broken straps, runners with holes in the uppers or soles, boots or shoes

that are completely worn down, and single shoes (yes, we get quite a few single shoes donated, but very few one-legged customers!) all finish up in the bin and cost us money to dispose of.

But here's the best shoe story of all ... a lady recently came in and bought a pair of very high heeled, very shiny, very red, platform-soled shoes. Was she going to wear them somewhere special? No, she was going to fill them with soil and plant succulents in them!

## NEW TRIAL TO PROTECT SHIPWRECKS

Heritage Victoria is teaming up with coastal community groups to safeguard the state's fragile and diverse maritime heritage.

The Community Shipwreck Monitoring Trial has been launched with the aim of protecting some of Victoria's most significant shipwreck sites from damage caused by human interference.

The trial will see members from local Volunteer Coastguard (VCG) and Surf Life Saving Clubs (SLSC) conduct regular patrols from Queenscliff, Werribee and Inverloch.

The 12-month program is part of a commitment to preserving the state's shipwreck heritage through helping communities understand their local sites and conduct important monitoring work.

Community involvement is paramount in ensuring the ongoing protection of these precious shipwrecks, which provide valuable social and economic benefits to coastal townships.



Above: Sailing Ship "Hinemoa" Stranded on Rocks at Lorne, Victoria, 1908

Lorne **Community Bank**® Branch

# Your best interests at heart.

**3.89% pa**  
Connect Package Home Loan<sup>^</sup>

If your bank isn't doing the right thing by you, change to one you can feel better about.

**Drop into your nearest branch at 1/32 Mountjoy Parade, Lorne or phone 5289 1787 to find out more.**

[bendigobank.com.au](http://bendigobank.com.au)

**4.15% pa**  
Standard Comparison Rate\*



**Jeremy Morris**  
Senior Branch Manager  
0428 392 421



**Bendigo Bank** The better big bank.

Terms, conditions, fees and charges apply. All information is correct as at 23 July 2018 and is subject to change. Full details available on application. Lending criteria apply. \*The comparison rate displayed is calculated for a Residential Variable Rate, Owner Occupied, Principal and Interest loan based on an amount of \$150,000. WARNING: This comparison rate is true only for the example given and may not include all fees and charges. Different terms, fees or other loan amounts might result in a different comparison rate. ^Interest rate is current as at 23 July 2018. Rates and fees are subject to change. Offer is available to customers with new Owner Occupied, Principal and Interest home loans above \$150,000 with a loan to valuation ratio of up to 90%, and three additional or complementary products taken as part of the Connect Package. Complementary products cannot be from the same product type. Offer ends on 31 December 2018. Credit provided by Bendigo and Adelaide Bank Limited ABN 11 068 049 178 Australian Credit Licence 237879. A1242230-6 (424444\_v3) (3/12/2018)



Join haven to receive  
**Relax Express  
massage & Organic  
Express facial  
for \$99\***

Available Monday to Friday.

**endota spa Lorne** Mantra Resort, 35 Mountjoy Parade Lorne, VIC 3232  
t. (03) 5289 5103 e. [lorne@endotspa.com.au](mailto:lorne@endotspa.com.au) w. [endotspa.com.au/lorne](http://endotspa.com.au/lorne)

\*Conditions: Valid 13 May to 16 June 2019. Offer valid at endota spa Lorne. See [endotspa.com.au](http://endotspa.com.au) for full terms.

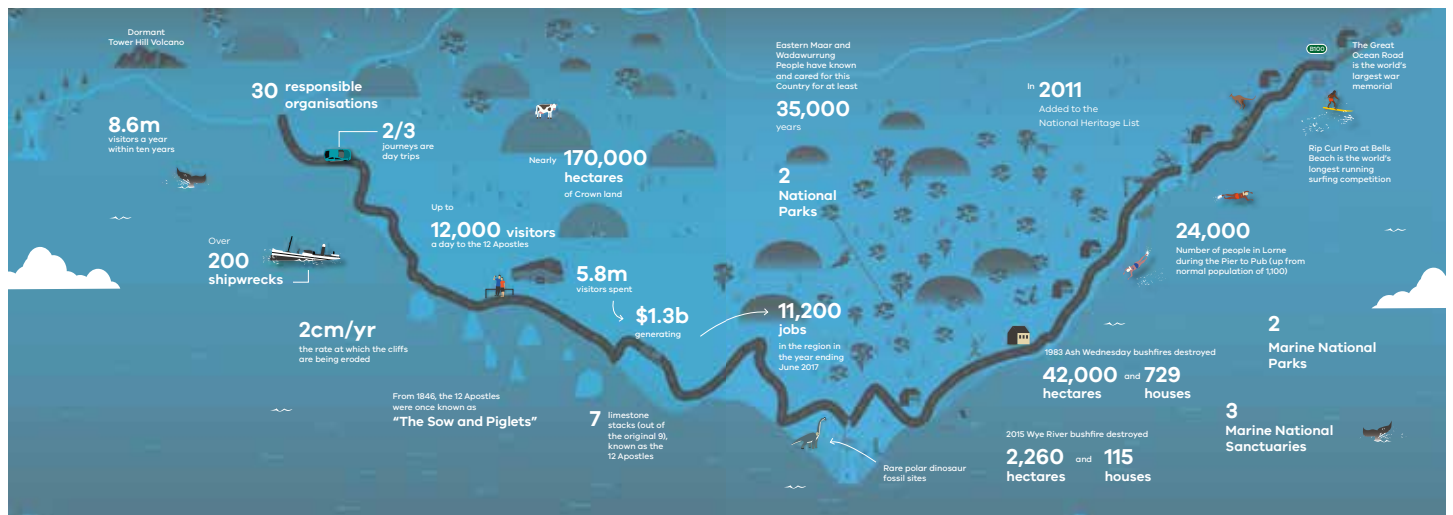
# PUBLIC MEETING ON GOR ACTION PLAN

A further number of open forums are planned to unveil progress made by the Victorian Government under its landmark action plan to protect the iconic Great Ocean Road coast and parks for future generations. The Action Plan was conceived in October last year.

Forums have already been held in Melbourne, Torquay, Deans Marsh and Aireys Inlet. Forums still scheduled are for Anglesea, Aireys Inlet, Lorne, Wye River, Warrnambool, Peterborough, Port Campbell, Timboon, Colac and Apollo Bay.

Under its action plan (Action #8), early action is involving the community in developing long-term objectives and a shared vision for the future of the region that protects the iconic landscapes and liveability of local communities and provides for a great visitor experience.

This vision is a key input that is required for the subsequent development of an overarching strategic framework plan for the region that provides future direction for land-uses, landscape and visitor management, and sustainable economic development.



**Aireys Inlet:** Community Hall, 6 Great Ocean Road, Saturday 1 June (10:00 AM – 12:00 PM)

**Anglesea:** Anglesea & Aireys Inlet Senior Citizens Club, 1B McMillan Street, Saturday 1 June (2:00 PM – 4:00 PM)

**Wye River:** Wye River Surf Lifesaving Club, Foreshore, Great Ocean Road, Saturday 8 June (10:00 AM – 12:00 PM)

**Lorne:** Lorne Community House, Mountjoy Parade, Saturday 8 June (2:00 PM – 04:00 PM)

**Warrnambool:** Pavilion Café & Bar, 50 Viaduct Road, (Tuesday 11 June (6:00 PM – 8:00 PM)

**Peterborough:** Peterborough Community Hall, Macs Street, Wednesday 12 June (10:00 AM – 12:00 PM)

**Port Campbell:** Surf Lifesaving Club, Cairns Street, Wednesday 12 June (6:00 PM – 8:00 PM)

**Timboon:** Timboon & District Public Hall, 57 Bailey Street, Thursday 13 June (6:00 PM – 8:00 PM)

**Colac:** COPACC Civic Hall, 95-97 Gellibrand Street, Monday June 17 (6:30 PM – 8:30 PM)

**Apollo Bay:** Apollo Bay Golf Club, 21 Great Ocean Road, Tuesday 18 June (6:00 PM – 8:00 PM)

Further information about the project online <https://engage.vic.gov.au/great-ocean-road>.

## Great Ocean Road Action Plan

Forest, Fire and Regions | Department of Environment, Land, Water and Planning  
Level 4, 30-38 Lt Malop Street, Geelong Vic 3220  
E: [Greatoceanroad.Actionplan@delwp.vic.gov.au](mailto:Greatoceanroad.Actionplan@delwp.vic.gov.au)

**DAWSONS  
CONCRETING  
LORNE**  
**DRIVEWAYS SLABS PATHS  
ALL TYPE OF CONCRETE  
RETAINING WALLS**  
**No job too big or too small  
Free quotes  
Phone 0404 892 204**



### LORNE · COUNTRY · CLUB



**The Lorne Country Club**  
Visitors always welcome!

Golf Green Fees  
\$35 - 18 holes / \$25 - 9 holes  
Hire clubs & buggies available

Tennis Court Hire  
\$20 per hour  
Racquet & ball hire available

(03) 5289 1267  
info@lornecountryclub.com.au  
www.lornecountryclub.com.au



The Peak at Lorne Country Club  
Bistro & bar open daily Dec/Jan  
Weddings & events available year round  
hello@thepeaklorne.com  
www.thepeaklorne.com

### pollobay **COMPUTERS** sales and service

A mobile service for business and home  
PC users

Installations / Maintenance

Virus Removal

Modems and Networking

Sales—NEW PCs & Laptops

Craig Buckingham  
p: 5237 7195  
m: 0431 749 131  
e: [craig@abaycomputers.com.au](mailto:craig@abaycomputers.com.au)

VISITING LORNE WEEKLY



### **TRIPP BUILDING PTY LTD.**

New Homes  
Extension, Renovations,  
Decks, Pergolas, Retainer Walls  
Registered Builder No. DBU-12327  
MBA member No. 099036  
Lorne ~ Apollo Bay Ask for Peter  
Mobile:0429799829  
Tel: 5237 7348  
[trippbuilding@skymesh.com.au](mailto:trippbuilding@skymesh.com.au)

# EDITORIAL

## Appreciate the artist and the work

Geoff Raymond had a formidable reputation as a television announcer back a few decades ago but there was always a bit of a rebel in Geoff; he was a scallywag of no mean standing.

Once, reading the evening news on the ABC, he had shed his trousers but as the camera only showed the top half of him, I don't suppose it mattered.

"The difference between an artist and a businessman is massive," he once said in one of his sagacious moods. "An artist wants you to put your arm around his shoulders and hear words on what a fantastic, wondrous work had just been created.

"The businessman doesn't give a stuff about his own creation. All he wants is to make money!"

Many business people do care about the product they produce, but his astute observation highlights the soft underbelly of the artist, the sensitivity and especially the vulnerability of the artistic psyche, be it amateur or professional.

An artist by the very nature of his craft, possibly spends much too much time alone wrestling with those demons that ultimately guide him towards his own creation. And more often than not, a work is created in less than ideal conditions – lack of money and material resources, under pressure from a hundred and one directions, certainly the demands of his own drives.

It doesn't take a psychology degree to understand all this ...

Lorne has its fair share of people of artistic inclination and over the years our town has made every effort to attract creativity as part of the overall image; we certainly don't want to be known only as a place of sun worshippers, good surf and a great place to live ... and very expensive real estate.

We've had the much respected Lions Easter Art Show for nearly 50 years and over the last decade or so, Graeme Wilkie's vision for a meaningful and internationally recognised sculpture exhibition on our picturesque foreshore has truly gained traction.

Graeme's vision for the arts has also placed one of Australia's leading galleries in our midst.

The artist, does contribute enormously to the image of Lorne, as does the business person, so the logical question is: how do we acknowledge and thank individuals for their contribution; how do we honour them for the part they play in making Lorne the place it is?

Thanking the business person (the publicity created by the event is often enough to warrant the largesse) is easy, but art by its very nature is a much more complex puzzle to solve.

One thing stands out – we should hold artistic contribution in high regard.

Sure, winning a prize at an art exhibition carries with it its own sense of gratification and achievement for the artist. Awarding prizes is one, perhaps rather simplistic gesture to recognise the artist, but there is so much more that can be done.

As next year's Sculpture Biennale has a limited number of entries due to involvement by invitation, perhaps, there could also be a special token for all the participants, honouring them for the very act of taking part.

And it would also please the sculptors enormously if judges could pen a few words about each entry in the event catalogue.

Perhaps our town elders might even find it fitting to throw a formal lunch (or BBQ on the foreshore) to thank them for artistic efforts ...and the same with the Lions Easter Art Show - make sure the winning artists as well all the other participants know that Lorne appreciates their efforts and for allowing us to share in their artistic endeavours.

When prizes are handed out, allow the judge to say a few words about the winning works, and also about all who took part. It should not be forgotten a considerable effort is made by each contributing artist.

An artist should certainly not be treated as a 'commodity' - particularly in shows that are mounted for 'fundraising'.

**Jo Vondra**

Read your full coloured  
Lorne Independent  
Anywhere on this planet

Take out an electronic subscription for \$20

You can also subscribe to the  
mailed copy for \$35

Send your details and payment to:

Jo Vondra

PO Box 213, Vic 3232

Email: [jvondra@bigpond.net.au](mailto:jvondra@bigpond.net.au)

Tel: 5289 1344 Mob: 0401 744 152

You can pay electronically

BSB 063 708 ACC. 1003 5991

# LORNE LADIES GOLF DAY

Lorne hosted the annual regional competition for the Miss Lascelles trophy and with the general support from the local business community, was a great success.

It was hard to know which was the most awaited news on the recently held Miss Lascelles Day at Lorne Country Club: the winning team for the Silver Salver Stableford Event or the winner of our raffle for a \$200 voucher for Movida Restaurant at Lorne Hotel. The lucky winner of the raffle shall remain nameless so that she doesn't get swamped with companion offers, but she was from Anglesea Golf Club, so not too far to travel for a night out at Lorne.

Forty two women golfers came to Lorne from across the South Western Region from as far afield as Inverleigh, Ocean Grove and Apollo Bay, and we were blessed with a sunny day to welcome the women to Lorne's challenging course.

Lorne Hotel generously sponsored other prizes for our raffle and generous prizes for the three members of the winning team. The winning Silver Salver team was Vicki Hannah, Margaret Smith and Stacey Thomas from Apollo Bay, who went home very happy. Lorne Pharmacy donated pamper packs for the two Division Winners: Division 1: Vicki Hannah (Apollo Bay) and Division 2 winner: Glenice Hayward (East Geelong). Lorne Beach Gifts donated prizes for the three Nearest to the Pin Prizes for Sue Gell (Anglesea), Pat Malloch (East Geelong) and Lynne Toleman (Lonsdale).

Our own caterers at the Peak provided a delicious lunch and Platypi Chocolates, in Forrest, gave each player a chocolate platypus wrapped with the Club logo. (Platypi Chocolates will soon be also doing specialty chocolates with printing on the chocolate for those who are organising large events). All the women said they enjoyed the day, even if they found our hills very difficult.

The team from Barwon Valley even stayed overnight to be fresh for the competition and have enjoyed Lorne hospitality so much they are returning to the November Open.

Our first ever Lorne Division 7 Pennant Team has been playing on Fridays from mid April. The women have been playing well, considering most matches have been against players with considerably lower handicaps, which are not counted. There have been several individual wins, but the match played at Lorne is the one with a Lorne team win, against Queens Park 4-1, with one match cancelled due to the rain. They have ended up as fourth of six on the ladder, an excellent start to Division Pennant. This experience under the belt will bring a better season next year.

During May, a team entered the Lara Bowl, but the very early start for a 9.00 shotgun start proved too much of a handicap for the Lorne golfers. A Lorne team also went to the Winchelsea Bowl.

The breaking news of the month is that Lorne Course Slope Rating has been changed from 118 to 124 for women golfers. Golf Victoria reassessed the Lorne Course at our request and advised us of this recommendation, an acknowledgement of the challenging nature of the Lorne Course. New cards showing this change are to be printed soon, but it is effective immediately now the Country Club Committee has endorsed this change.

The Peak Restaurant is now closed for business until summer. However, the Peak is available to be booked for special functions such as weddings and big birthday parties! Go to the website for further details, [www.lornecountryclub.com.au](http://www.lornecountryclub.com.au)

Happy hitting and give us a call for further enquiries. New players always welcomed!

Phone Wendy Hutchison, President Womens Golf, 0419 878 089 or Sue Neill, Vice President 0418 674 062



Above: Captain Caz Bartholomew, Lesley Golsworthy, Rose Wyles, Chris Angus and Lynda Stewart. (missing: Danni De Bon)



Above: Golf winners from Anglesea - Margaret Smith, Vicki Hannah and Stacey Thomas.

# SURF COAST MULTI-PURPOSE INDOOR STADIUM UPDATE



Lorne might have much upgraded Stribling Reserve Pavilion but ... The Surf Coast Multi-Purpose Indoor Stadium is moving closer to construction stage, with people able to view images of what it will look like.

Surf Coast Shire Council is undertaking all necessary steps to prepare for construction of the new stadium, to be located in the north of Torquay. It will be formed by adding three courts to the existing single-court stadium at Surf Coast Secondary College and is planned to be completed by the end of 2020.

Council has been working with Surf Coast Secondary College and potential user groups of the stadium throughout the design process. A planning permit application has also been prepared, and will be publicly advertised shortly.

“As a Council, our goal is to support people to be healthy and active and this new community facility will help us achieve that, offering a space for fitness, sport and a sense of community,” said Mayor Rose Hodge. .

“It can also be used for various other activities including school and community events.

“We want to maximise the use of the stadium. We have been working with user groups to tick off that goal and ensure it’s a valued place for the Surf Coast community.”

The \$13.5 million project is made up of a Council contribution of \$2.6 million, developer contributions of

\$2.9 million, and \$8 million in grants from the state and federal governments via the Better Indoor Stadiums Fund and the Building Better Regions Fund respectively.

Council resolved in December 2017 to transfer an estimated 3,176 sq m of Council-owned land to the Victorian Department of Education and Training to create a single land title. This will ensure we can make the best use of Council land and school land,” Cr Hodge said.

People can view drawings of the stadium and stay up-to-date with the project via the Your Say section at: [www.surfcoast.vic.gov.au](http://www.surfcoast.vic.gov.au).



**POINT BREAK**  
P L U M B I N G

**AL FORSYTH - PH: 0418 523 850**  
Locally known and trusted  
[www.pointbreakplumbing@outlook.com](mailto:www.pointbreakplumbing@outlook.com)



13 11 11

**MECHANICAL REPAIRS TOWING**

“Lorne Auto Care”  
 “Lorne Breakdown and Towing Service”  
 Phone 52892 910 Mobile 0408 579 868  
 Paul and Maxine Spizzica  
 Beaurepaire Drive Lorne  
 lornebreakdown@bigpond.com  
 Open Monday to Friday 8.30am to 5.00pm



**SIMPLE STORAGE SOLUTIONS**

- Personal & Business Storage
- Boat, Caravan & Vehicle Storage
- High Security Premises
- Individually Alarmed Units
- Electronic Gate Access
- 7 Day Access & CCTV

YOUR STORAGE PROBLEMS SOLVED

**5267 3116**

6 Alsop Drive, Winchelsea 3241



Water Supply Specialists

t: (03) 5231 1861  
 74 Dennis Street, Colac VIC 3250  
 www.watersupplycolac.com.au



All things water:

- Pumps
- Pipes & Hoses
- Fittings
- Irrigation
- Tanks
- Solar
- Pool
- Purification
- Fire Fighting
- Installation
- Repair

**MINI BINS**  
 2,3,4,6 Cubic Metre Bins  
 DOMESTIC • COMMERCIAL • EVENTS  
 Give Alistair a call on 0400 096 084

**TERMITE WATCH**

PEST CONTROL

DOMESTIC • INDUSTRIAL • COMMERCIAL

The **Total Pest Control** choice for Lorne & the Surf Coast

‘Termite Watch’ practices Integrated Pest Management techniques. This means; we will always seek to use low-environmental-impact products and non-toxic solutions as our first choice.

For more information please contact us on 1800 355 686

[www.termitewatch.com.au](http://www.termitewatch.com.au)

Termite Watch is locally owned and operated in Lorne – providing a complete Pest Control service Victoria wide.



**MINA architects**  
 m 0417 504 568  
 www.mina.com.au

# Have You Got Your Bags?



**Single use plastic bags no longer available...**



## WHAT'S ON IN JUNE

### Monday Night Music

Monday June 10<sup>th</sup> and 24<sup>th</sup>

Dinner from 6PM ~ Live music from 7PM

@mondaynightmusic for updates on bands

### Café & Restaurant

Luke's restaurant closes for an annual break from June 17 until mid September

### Bar & Barefoot Bowls

The bar will remain open Fri-Sun until June 17 and for Monday Night Music After that, special events, functions & barefoot bowls can be arranged by contacting 0429188884 ~ Get in touch!

### Bookings & Function Enquiries

Contact 52891462 or 0429188884

Updates @lornebowlsclub on facebook & instagram



# LORNE HOME TIMBER HARDWARE & LEISURE

## For All Your Hardware & Leisure Needs

**LOCAL DELIVERY AVAILABLE**

- **FIREWOOD**

Bulk redgum, sugar gum, bagged redgum, kindling & charcoal

- **RETAINING WALL SUPPLIES**

TP Sleepers, H&C sections, all lengths, bagged concrete & cement

- **HOMEWARES**

Kitchen & electrical appliances

- **GAS**

Refills, agent for Riordan LPG

- **TIMBER**

Small & bulk lots. Call Peter for a quote

- **HARDWARE**

Tools, power tools & key cutting

- **FISHING**

Fishing gear & bait

- **GARDEN**

Potting mixes, sprays & tools

- **OUTDOOR**

BBQs, tables, chairs & camping gear

- **LEISURE**

Umbrellas & beach gear

## Lorne Home Timber Hardware & Leisure

OPEN 7 DAYS A WEEK

MON-FRI: 7:30am-5pm SAT: 9am-5pm SUN: 9am-4pm  
58 Mountjoy Parade, Lorne 3232 Ph: (03) 5289 1329

**HOME**  
TIMBER & HARDWARE

GO WHERE THE TRADIES GO

# deluxe

Lorne's fabulous fashion boutique, locally owned and operated since 1999.

Featuring a carefully curated range of men's and women's clothing from Australian and international designers.

Open 7 days a week, including winter.

112 Mountjoy Parade Lorne

p 0352895070

Follow us on Instagram @deluxelorne,  
Facebook @deluxelorne, and buy  
online [www.deluxelorne.com](http://www.deluxelorne.com)

# Clinical Governance Principles for Pharmacy Services 2018

PSA's recently released clinical governance principles are a blueprint for the design and implementation of safe and high-quality pharmacy services.

The Clinical Governance Principles for Pharmacy Services 2018 document provides pharmacists and organisations involved in the provision of pharmacy services the guidance to improve safety, quality and consistency of new and existing services in healthcare delivery.

The principles build on the work undertaken by the Australian Commission for Safety and Quality in Health Care.

PSA National President Dr Chris Freeman spoke to the importance of clinical governance as a key mechanism to reduce medicine-related harm, and encouraged pharmacists to embrace the guidelines so that they can provide the 'best possible care to patients'.

'We have a high-quality health system in Australia, and a high-quality pharmacy profession providing valued care to their communities and patients, but there are still unacceptable variations in health outcomes,' he said.

The high cost of medicine misadventure was highlighted in PSA's Medicine Safety:Take Care report, which found that 250,000 people are admitted to hospital each year due to medicine-related problems, at a cost of \$1.4 billion.

'Pharmacists are the key to improving the safe and quality use of medicines but, while all pharmacy services have a degree of quality management and governance, the formal application of clinical governance varies considerably,' Dr Freeman said.

All the principles described in the document are essential to safe and effective care. The principles are not auditable accreditation criteria, but can be used to help identify safety and quality gaps when designing, monitoring and evaluating pharmacy services.'

Dr Freeman said that the principles will also shape high-quality pharmacist services into the future, which will be funded by the 7th Community Pharmacy Agreement.



**Your monthly health newsletter brought to you by the team at the Lorne Pharmacy & Beauty Retreat**

Renea Forsyth is our regular Wednesday pharmacist, specialising in women's health issues, mother and baby care, skin problems and fashion ...  
Come in for a chat any Wednesday

**138 Mountjoy Parade, Lorne 3232**  
**tel (03) 5289 1580 fax-a-script (03) 5289 2750**

**Front Cafe**  
8.30 - 12.00

**Bistro**  
12.00 - 15.00

**Dinner**  
17.30 - 20.30

**Winking Seal Sports Bar**  
15.00 - Close



Also offering weddings, events & conferences. Speak to one of our friendly team for more information.



268 Mountjoy Parade, Lorne.

[www.grandpacific.com.au](http://www.grandpacific.com.au)  
03 5289 1609



**Breakfast**  
9.00 - 11.30

**All day dining**  
11.30 - 18.00

**Happy Hour**  
15.00 - 18.00

We offer everything from a romantic beachfront dinner to birthday parties & weddings! Ask our friendly staff for more information.



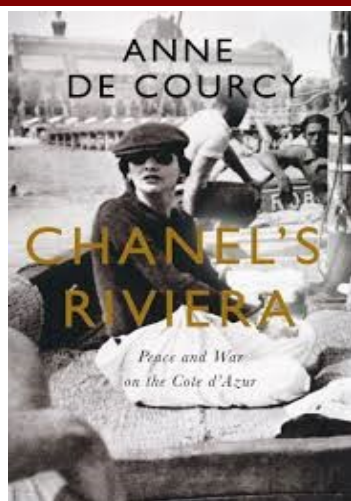
81 Mountjoy Parade, Lorne

[www.lornebeachpavilion.com.au](http://www.lornebeachpavilion.com.au)  
03 5289 2882



# Lorne Beach Books

Australian Regional Bookseller of the Year  
Australian Book Industry Awards

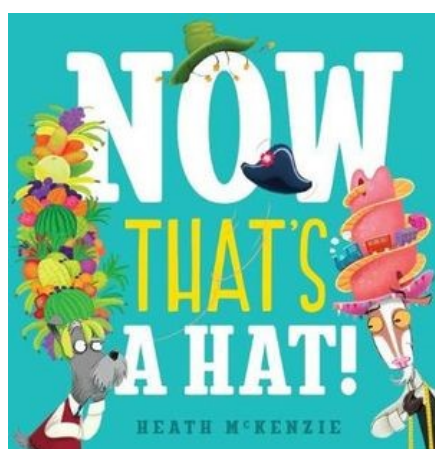
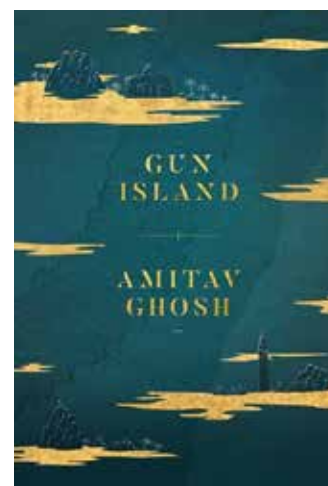


Far from worrying about the onset of war, in the spring of 1938 the burning question on the French Riviera was whether one should curtsy to the Duchess of Windsor. Few of those who had settled there thought much about what was going on in the rest of Europe. It was a golden, glamorous life, far removed from politics or conflict.

*Chanel's Riviera: Life, Love and the Struggle for Survival on the Cote d'Azur, 1930 - 1944,*  
Anne de Courcy, \$32.99

A dealer of rare books, Deen is used to a quiet life spent indoors, but as his once-solid beliefs begin to shift, he is forced to set out on an extraordinary journey; one that takes him from India to Los Angeles and Venice via a tangled route through the memories and experiences of those he meets along the way. It is a journey which will upend everything he thought he knew about himself, about the Bengali legends of his childhood and about the world around him.

*Gun Island, Amitav Ghosh, \$32.99*



That hat is too BIG! That hat is too SMALL!  
That hat is too SHORT! That hat is too TALL!  
That one's too CRAZY! And that one might BITE!

How hard can it be to find a hat that's JUST RIGHT?!

*Now That's A Hat!,*  
Heath Mckenzie, \$17.99



**108a Mountjoy Parade, Lorne, 3232**  
**Phone: 5289 2489 Fax: 5289 2689**  
**Email: [lornebooks@bigpond.com](mailto:lornebooks@bigpond.com)**  
**[www.lornebeachbooks.com.au](http://www.lornebeachbooks.com.au)**

